

JANUARY 2026 NEWSLETTER

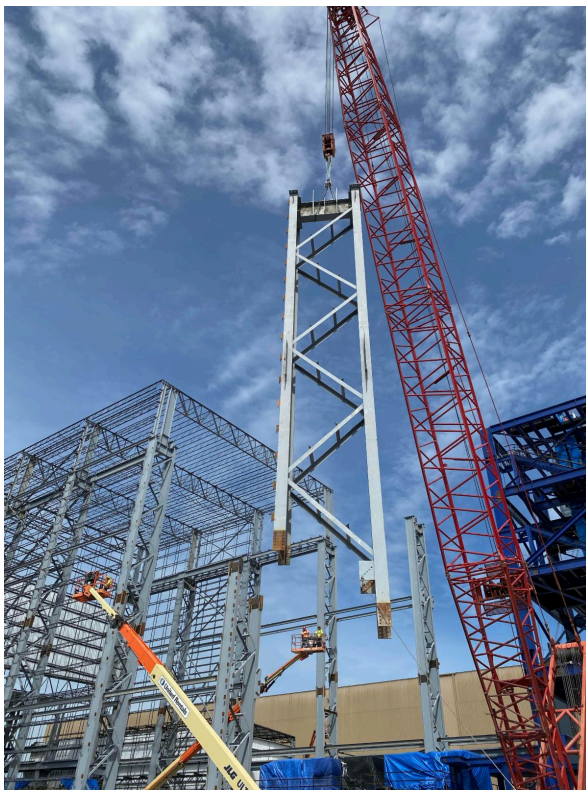


Founded in 1994, **Southern Industrial Contractors (SIC)** is a **full-service, AISC-Certified structural steel fabricator** specializing in complex medium to heavy industrial projects across the United States. Combined with our design and erection capabilities, SIC has successfully delivered some of the industry's most intricate and demanding projects for over three decades earning a reputation for quality, safety, and reliability.



SIC's structural steel wide range of services include:

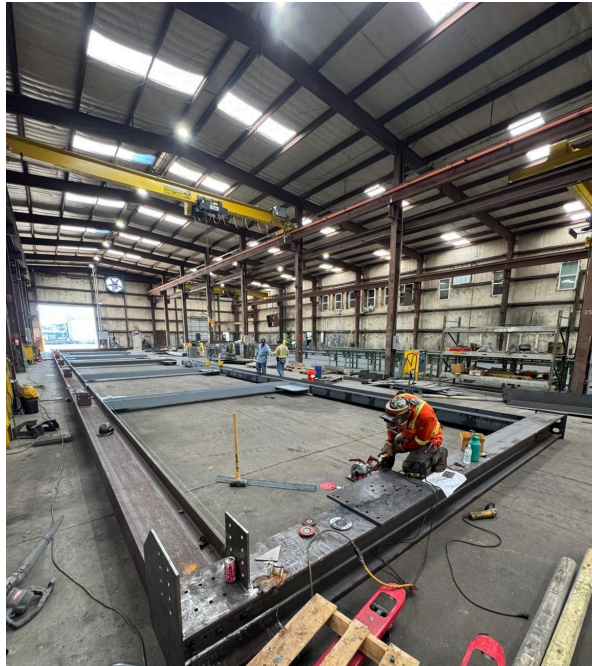
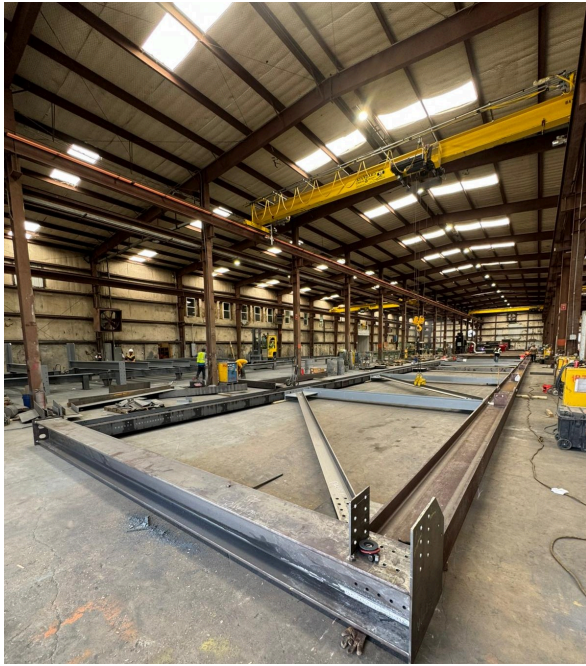
- Pre-construction services including budgeting, design-build, lean construction evaluation, site-specific study, and value-engineering
- Engineering Services including structural steel design, connection design, building design, shop drawing detailing and development, stair and handrail design, crane runway design, and 3D-modeling via Tekla and Building Information Modeling (BIM)
- High-quality structural steel fabrication including trusses, plate work, heavy structural components, platforms, etc.
- Miscellaneous metals fabrication including ductwork, stairs, handrails, ladders, etc.
- Shop Application of Complex Protective Coating Systems via temperature-controlled paint booths
- Over 500 AISC-vigorously trained steel fabricators, fitters, erectors, and welders
- Over 30 company-owned cranes with numerous boom configurations and lifting capacities up to 650-ton for large-member erection



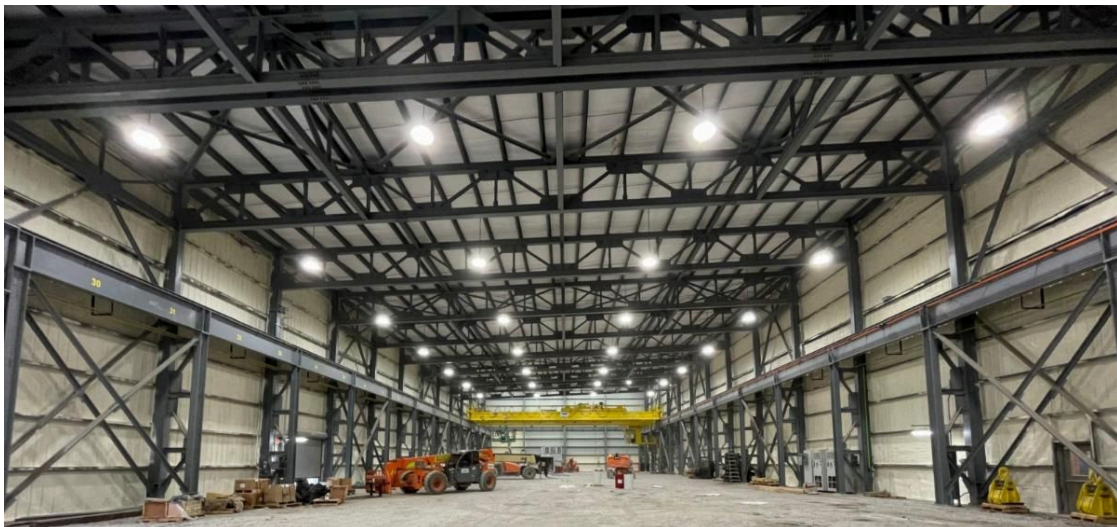
SIC's state-of-the-art fabrication facility is situated on 35-acres strategically centralized to the southern U.S., and is equipped with the following:

- Peddinghaus Beam Drill Line 1250/9B/D CNC including incoming and outgoing conveyors (multiple)
- Peddinghaus Peddiblast II RY1760 including incoming and outgoing conveyors (multiple)
- PythonX Robotic Structural Steel and Pipe Fabrication System (multiple)
- PythonX Plate 60' Table (multiple)
- Peddinghaus Model BS 1250-510 (CNC Controlled) Horizontal Band Saws (multiple)
- Peddinghaus AFCPS-863/HD Angle Master including incoming and outgoing conveyors (multiple)
- Peddinghaus 643-Q Anglemaster Angle Line Machine including incoming and outgoing conveyors (multiple)
- Peddinghaus Duplicator FAGOR CNC-Control including incoming and outgoing conveyors (multiple)
- Peddinghaus FPB-1800 CNC Plate Punching Machine including incoming and outgoing conveyors (multiple)
- Camber Machine, Model CM-2/100T with Simplex G3 Series Portable Pump (multiple)
- Peddinghaus 210 Super 20 Ironworker + dies and brakes (multiple)
- Sunrise Iron workers Model IW-1105 + dies and brakes
- Nelson Nell•reld 6000 Stud Weld (Nelson Nell•reld 6000 Stud Welder 206--575V, 3PH, 60 HZ) (multiple)
- Cincinnati Mechanical Press Brake (340 Tons with 10'-14' bed) including outgoing conveyors

- Cincinnati Metal Shear (1/2" Capacity, 12' Deck)
- Hydraulic Beam Straightening Press
- Electric Welder
- Rebar Shear Line (CRS Specialties Model 635)
- Piranha PII 140 Ironworker (multiple)
- Bend-Tech (Dragon) Model # A250
- Bend-Tech (Dragon) Model A400
- Niagara Plate Roller Model#6x72
- Arnold Bender
- Overhead Cranes ranging from 10-ton to 40-ton (QTY: 26)

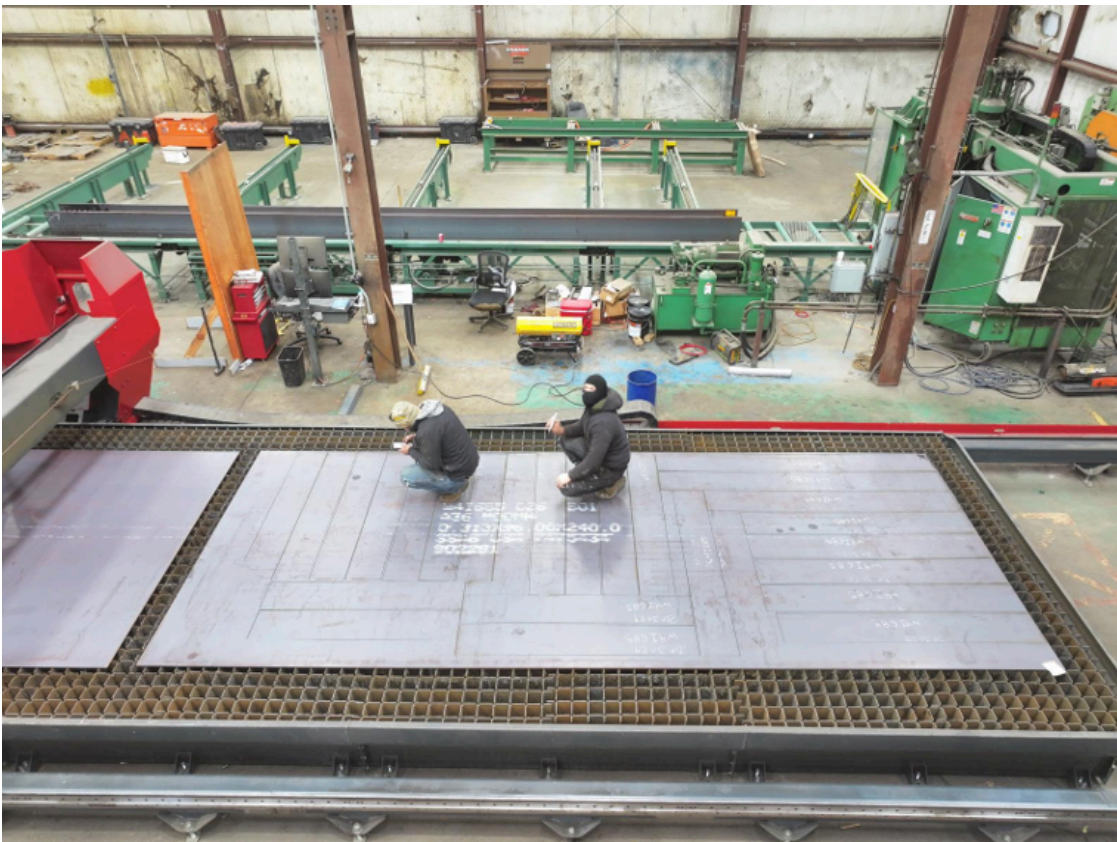


SIC recently received an order to design, fabricate, and install clear-span truss girders that are over 180-ft long and over 18-ft tall. These clear-span truss girders were designed to carry point loads in excess of 68,000 pounds. Each truss girder weighed in excess of 200,000 pounds. SIC fabricated and assembled these large trusses in our fabrication facility to ensure the exact tolerances had been achieved. SIC then disassembled the trusses and shipped the trusses to the project site for installation by SIC's erection crews.



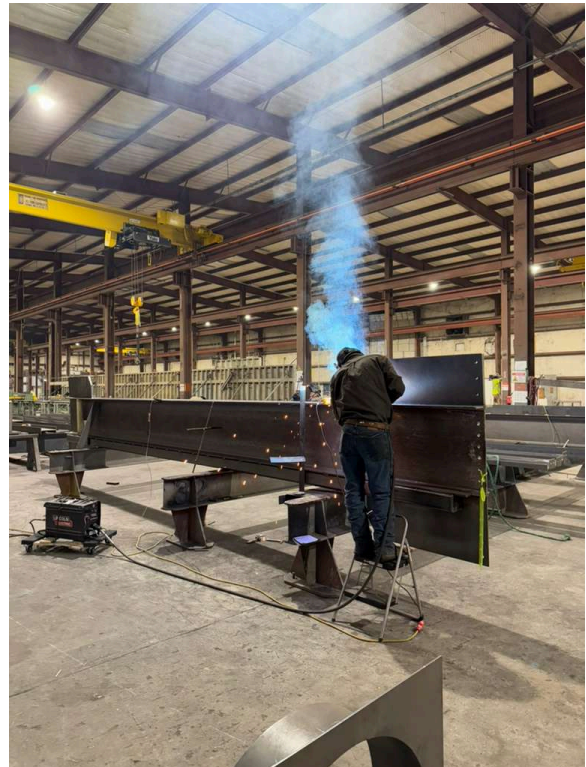
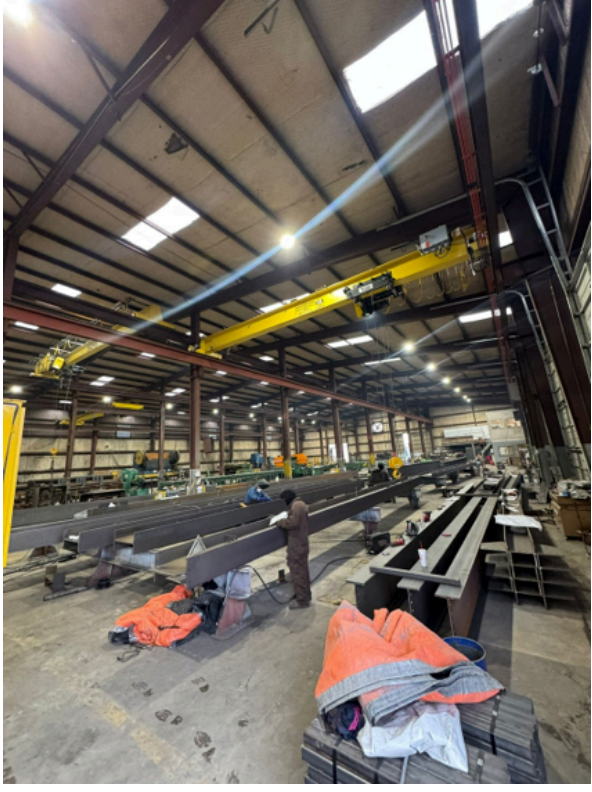


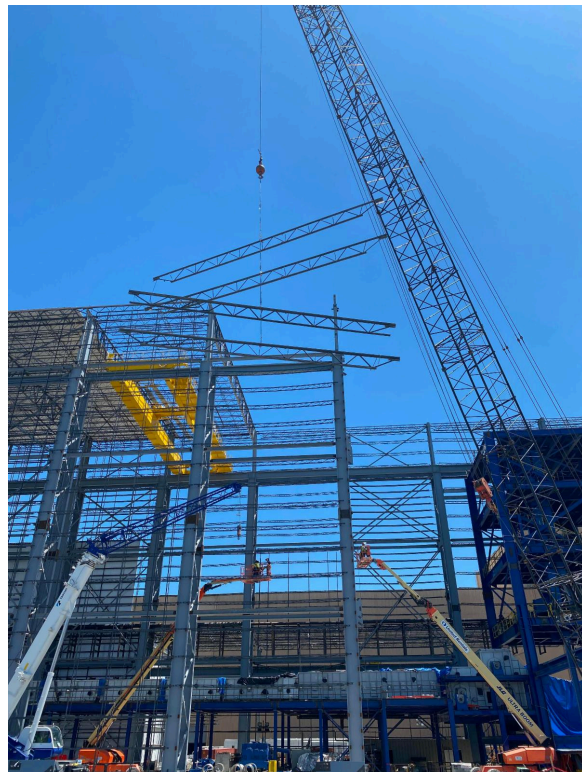
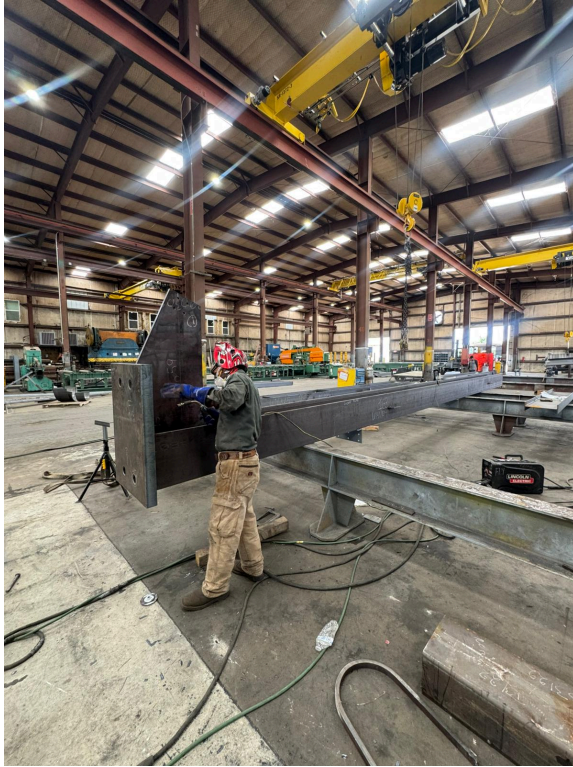
The built-up trusses in the above photo were part of a new crane building being constructed in the central U.S. region. These trusses are 124-ft wide X 72-inches deep. SIC's fabrication services averaged less than 11 man-hours per ton on this work. A portion of SIC's scope of work on this project also included installing numerous 25-ton and 50-ton overhead cranes, crane runway beams, and crane rails to support the plant operations. SIC assisted with the initial design for these trusses, columns, and crane runway beams which lowered the overall project cost by simplifying the design, fabrication, and erection for the project.



Southern Industrial Contractors by the Numbers:

- 1,250 tons of structural steel tons per week
- 150,000+ square feet of enclosed production space under roof
- 35+ acres strategically located in the south-central region of the U.S.
- 1 million+ in-house manhours per year for fabrication and erection services
- 24,000 square feet of temperature-controlled paint facilities
- 500+ AISC-vigorously trained steel fabricators, fitters, erectors, and welders
- 30+ company-owned cranes with numerous boom configurations and lifting capacities up to 650-ton for large-member erection
- SIC's in-house trucking division ensures flexibility for the most-demanding schedule





Southern Industrial Contractors recently performed the work shown in the photos above which included 7,600 tons of structural steel with eave heights of 135 feet, numerous overhead crane installation, and 700,000 SF of wall sheeting, roof cladding, and 6-inch batt insulation.



SIC was recently awarded a project to design and construct over 2,000 HSS trusses shown in the photos above. Each HSS truss was approximately 50 to 70 feet long and primarily constructed with HSS 8X8. SIC fabricated these HSS trusses at an average of less than 19 manhours per ton, and all 2,000+ trusses were fabricated and shipped to the project site in less than 30 days.



Give us a call for your upcoming project needs.

Southern Industrial Contractors is a **full-service** and **self-performing** construction firm specializing in:

- Site work, mass grading, drilling & blasting, rock removal
- Pile Driving (H-Piles, concrete pilings, auger-cast, drill piers, sheet piling)
- Concrete Foundations/Slabs/Structures/Walls/Pits, Concrete Paving
- Concrete Demo/Crushing/Recycling
- Heavy Equipment Foundations
- Mechanical / Equipment Installation
- Crawler Crane Services/Rigging (650 tons cranes)
- Structural Steel Fabrication/Erection
- Pre-engineered metal building erection
- Utility Installation, Fireline, Storm Drain, Gas Line
- Electrical
- Engineering / Design services / EPC

Sam Estis
Business Development
samestis@sicllc.net
Cell: (318)348-7947

David Adams
Business Development
david.adams@sicllc.net
Cell: (912)658-3152

Ray Winters
Project Management
Estimating
ray.winters@sicllc.net
Cell: (601)572-9893

Tommy Taylor
Electrical Division Director
Business Development
tommy.taylor@sicllc.net
Cell: (870)784-0105

Josh Parker
Mechanical Division
Business Development
josh.parker@sicllc.net
Cell: (850)890-5792

Sam Carson
Project Management
Estimating
sam.estisjr@sicllc.net
Cell: (318)334-9011



Try email marketing for free today!